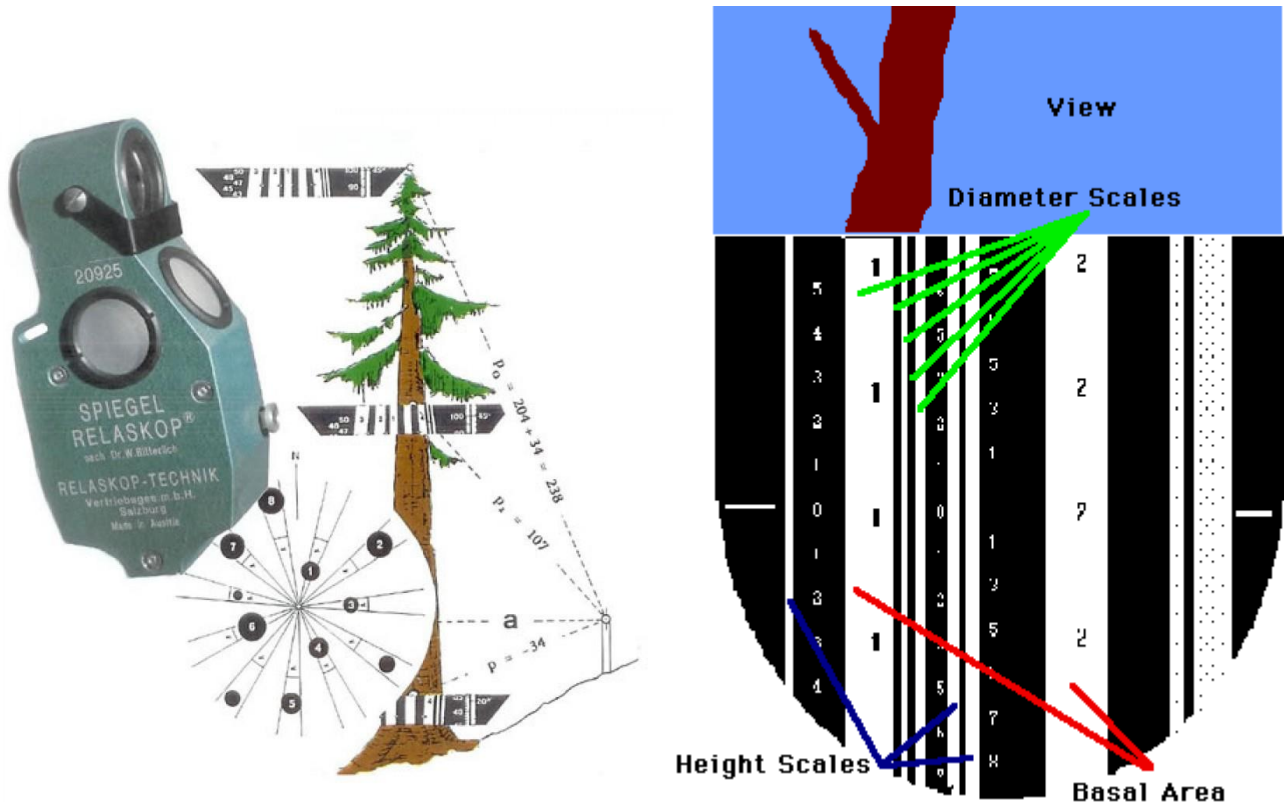


# SPIEGEL RELASKOP Wide Scale



The Relaskops offer quite a few other measurement applications in practical and scientific forestry.

For example:

Relaskops are the principle instrument of "variable plot sampling", which has the special advantage of selecting a basal-area weighted distribution. In addition, the appropriate stem numbers per hectare can be derived from the ACS selection sample.

Measurement of total tree height, or heights to particular upper stem diameters. Measurements of upper stem diameters at particular heights.

Determining the horizontal distance, with automatic correction for the angle of inclination.

Quick determination of the "slenderness" (height/diameter ratio) of standing trees.

Determination of form heights, and the volumes of standing trees by Pressler's formula.

Determination of slope angles

Used in variable plot and Three P sampling. American Scale reads in English units (sq. ft./acre, inches, feet).

Use where trees are smaller than 96" dbh on level or steep terrain. Metric Scale reads in metric units (sq.

m/hectare, centimeters, meters). Excellent for a variety of forest conditions and tree sizes. **Wide Scale is designed for metric measurements (diameter measurements convert to inches or centimeters).**

**Recommended for trees larger than 244 cm (96") dbh. Works on level or sloping terrain.** CP Scale is ideal when metric or English measurements are desired (basal area in sq. m/hectare only). Leather case and illustrated booklet included.

Includes:

Spiegel Relaskop Metric Wide Scale

Leather Case

Illustrated booklet